

[Jump to Website](#)

[Request Quote](#)

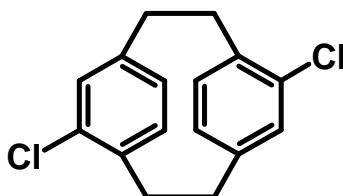
Product Specifications

5,11-Dichlorotricyclo[8.2.2.24,7]hexadeca-4,6,10,12,13,15-hexaene

CAS 10366-05-9

Syn 6,12-Dichlorobis(*p*-xylylene); Dichlorodi-*p*-xylylene;

Structure:



Mol. Formula
Source

C₁₆H₁₄Cl₂
Synthetic

Mol. Wt.

277.12

Test

Specification

Appearance	White crystalline powder
Mp	165-167 °C
Assay	≥ 99%
Residual Ash	< 0.2%
Heavy metals	< 10 ppm

Storage: Maintain in cool, dry containment.